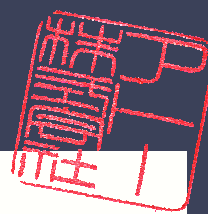


WSE-7120

EzWestLumi plus

Faster and More Quantitatively with Higher sensitivity!



EzWestLumi plus is a superior high sensitive luminous substrate for detection of antibodies labeled with horseradish peroxidase (HRP) on western blotting. **EzWestLumi plus** is used for chemiluminescence detection.

- No need to incubate !
- Super-high sensitivity with affordable price !
- Low background and hardly saturable !
- Wide dynamic range !

Model	Name	Code	Volume	Storage
WSE-7120S	EzWestLumi plus	2332637	Reagent A : 50mL Reagent B : 50mL	Cold Storage
WSE-7120L		2332638	Reagent A : 250mL Reagent B : 250mL	

EzWestLumi plus



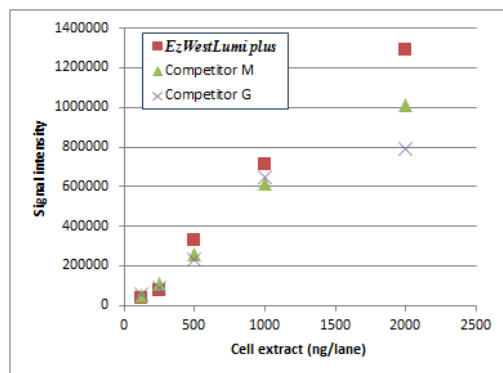
Competitor M



Competitor G



Sample; HepG2 cell extract
Antibody; 1/100,000 dil. HRP-conjugated anti-actin mAb
Detection; **EzCapture MG**
Normal mode, 5 sec



EzWestLumi plus



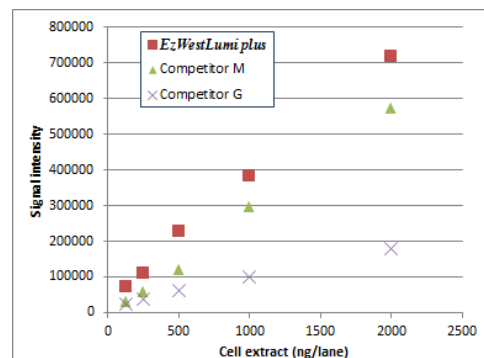
Competitor M



Competitor G



Sample; HEK293 cell extract
1st Antibody; 1/2,500 dil. Anti-Smad rabbit mAb
2nd Antibody; 1/100,000 dil. HRP-conjugated anti-rabbit IgG pAB
Detection; **EzCapture MG**
Normal mode, 1 min



ATTO Corporation

3-2-2 Moto-asakusa, Taito-ku, Tokyo 111-0041, JAPAN

Tel: +81-3-5827-4863 Fax: +81-3-5827-6647

e-mail: eig@atto.co.jp

URL: <http://www.atto.co.jp/eng/index.html>