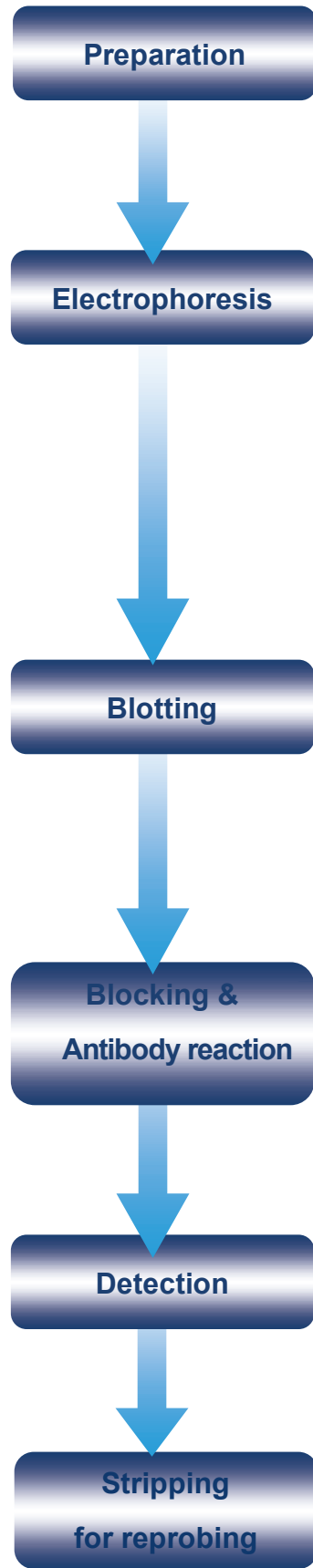


## ATTO related product informations



### SDS Sample preparation solution Kit

AE-1430 EzApply

### Buffer for SDS-PAGE

AE-1410 EzRun

AE-1412 EzRun C+

### Protein molecular weight marker

AE-1440 Ez Standard

AE-1450 Ez Standard Prestain Blue

### Precast Gels

e-PAGEL (ATTO mini size 8.5x9cm) : 5-20%, 10-20%, 7.5%, 10%, 15%...

c-PAGEL (ATTO compact size 6x6cm) : 5-20%, 10-20%, 7.5%, 10%...

### Vertical electrophoresis equipment

AE-6530 / WSE-1100 / AE-6500 / AE-7350 / WSE-1020 / WSE-1500.....

### Power supplies

AE-8135 / 8155, WSE-3200 / 3500...



### Western Blotting solution Kit

AE-1465 EzFastBlot

### Semidry Blotter

WSE-4020 HorizeBLOT 2M-R

WSE-4040 HorizeBLOT 4M-R

WSE-4110 PoweredBLOT-One

### Power supplies

AE-8135 / 8155, WSE-3200 / 3500...



### Blocking solution

AE-1475 EzBlock Chemi

AE-1476 EzBlock BSA

AE-1477 EzBlock CAS

### Wash solution (TBS solution)

AE-1480 EzWash



### Substrates for HRP

AE-1495 EzWestLumi

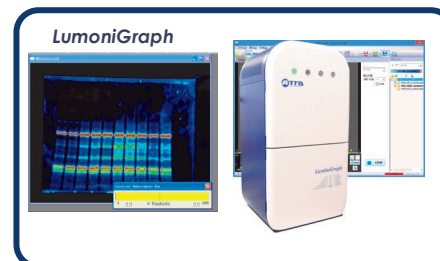
WSE-7120 EzWestLumi plus

AE-1490 EzWestBlue



### Cooled CCD Gel Imaging System

WSE-6100 LuminoGraph



### Stripping Reagent

WSE-7240 EzReprobe

## Chemiluminescence Imaging System



### Chemiluminescence CCD Imaging System

# LuminoGraph



**ATTO Corporation**

3-2-2 Moto-asakusa, Taito-ku, Tokyo 111-0041, JAPAN  
Tel: +81-3-5827-4863 Fax: +81-3-5827-6647  
e-mail: eig@atto.co.jp / URL: <http://www.atto.co.jp/eng/index.html>



LuminoGraph is designed to offer a high S/N capture with thermoelectrically cooled CCD, and PC integrated operation with USB connection, which make the analysis workflow simple, fast, and highly cost-effective. Automatic Exposure mode optimizing the luminescent image rapidly and SUM mode integrating extra week light signals from the sample over long exposure time are available. Fluorescent image can be captured in combination with UV or Visirays - LED illuminator (optional).

## Features

### High sensitive detection

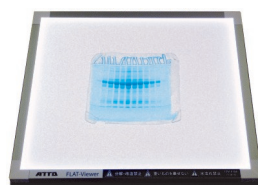
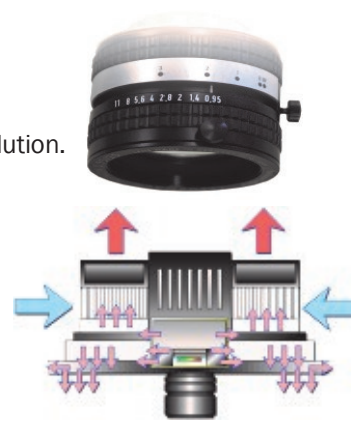
The system is optimized for highly sensitive detection with 1.4M pixels effective image resolution.

### Low noise mechanism

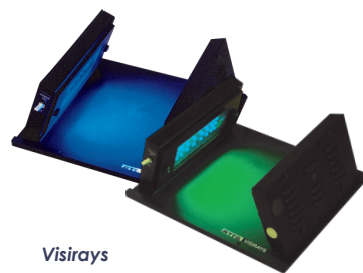
Deeply cooled CCD(-30) offers high sensitivity in low noise level (high S/N ratio). ATTO cooling system is highly effective not only for cooling, but also for keeping cooled temperature stably by optimized heat radiation system.

### Multifluorescence detection

The main system can be used for multifluorescence detection such as EtBr, SYBR green, SYPRO Ruby, CBB, etc. with various excitation light sources.



Flat viewer



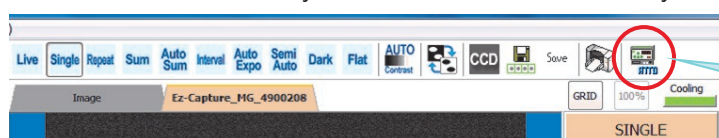
Visirays

### Selectable lens for optimizing of efficiency

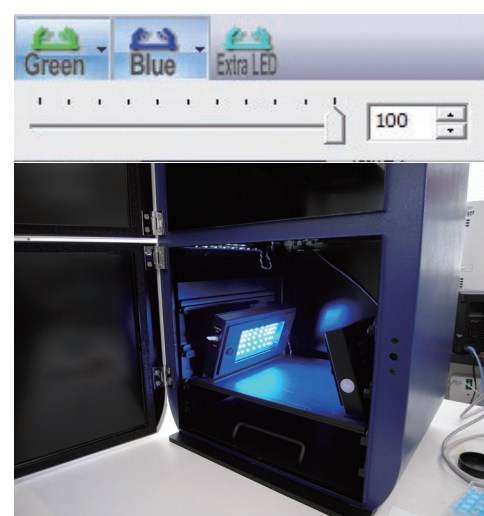
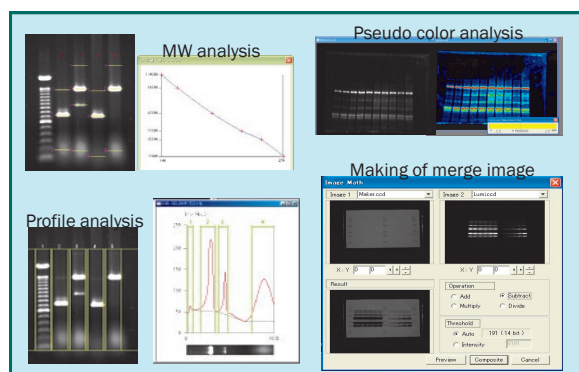
F0.95 fixed focal length or F1.2 zoom lens is selectable according to your desired application.

### Optimized function and user-friendly CS analyzer software

The data can be instantly transferred to linkable CS analyzer software by one click.



Click!



It is applicable for diverse imaging data such as chemiluminescence, bioluminescence, fluorescence and colorimetric.

## WSE-6100 LuminoGraph Product Configuration

Type	WSE-6100 H	WSE-6100 Z
CCD	Cooled CCD (-30°C) 1392 x 1040 pixels	
Lens	F0.95 25mm fixed focal length (high sensitivity)	F1.2 12.5-75mm Zoom
Control Software	ImageSaver 6 [for Windows 7(64/32bit) / Vista(64/32bit) / XP SP3]	
Analysis Software	CS Analyzer [for Windows 7(64/32bit) / Vista(64/32bit) / XP SP3]	
Dynamic range	16-bit, 4 orders of magnitude	
Image Storage	16bit TIFF / 16bit CCD (Convertible into 8bit file format such as JPEG, TIFF, BMP etc.)	
Image size	80 x 60mm -150 x 110mm	40 x 30mm -Max 220 x 165mm
Pixel Size	6.45µm x 6.45µm	6.45µm x 6.45µm
Supported OS	Windows 7,8 (64/32bit) / Vista(64/32bit) / (ImageSaver6 / CS Analyzer)	
Power	AC100V-240 ±10V	
Cabinet Dimension	325mm(W) x 281mm(D) x 608mm(H)	
Net Weight	18.8Kg(excluding accessories)	

## Ez-Capture MG system selection

System	Composition	Application
LuminoGraph Combo 1	WSE-6100 standard set+ CS Analyzer software	* Luminescent detection of western blotting, southern blotting, northern blotting and luciferase assays
LuminoGraph Combo 2	WSE-6100 standard set+ CS Analyzer software + UV set(312nm UV transilluminator + YA-3/OY/SWP filters + Gel tray S)	* Luminescent detection of western blotting, southern blotting, northern blotting and luciferase assays * Fluorescent detection (EtBr, SYBR Green, SYPRO Ruby, etc.)
LuminoGraph Combo 3	WSE-6100 standard set+ CS Analyzer software + UV set(312nm UV transilluminator + YA-3/OY/SWP filters + Gel tray S) + Flat viewer and ND-0.1(50mm) filter	* Luminescent detection of western blotting, southern blotting, northern blotting and luciferase assays * Fluorescent detection (EtBr, SYBR Green, SYPRO Ruby, etc.) * Colorimetric gel imaging (CBB, etc.)
Additional useful options	AE-6935B Visirays Blue (440-500nm : peak 470nm) with SCF 515 filter AE-6935GS Visirays Green Short (490-525nm : peak 505nm) with YA-3 filter AE-6935GL Visirays Green Long (490-560nm : peak 525nm) with R-60nm filter	* SYBR Safe/ Green/ Gold, SYPRO Ruby, GFP, etc. * EtBr, etc. * Pro-Q Diamond, RFP, etc.

### \* Filter specification\*

SCF515	525nm Long pass
OY	540nm Long pass
YA-3	560nm Long pass
R-60	600nm Long pass
SWP	650nm Short pass



# LuminoGraph