

Submarine Electrophoresis System with built-in PowerSupply

WSE-1710 Submerge-Mini

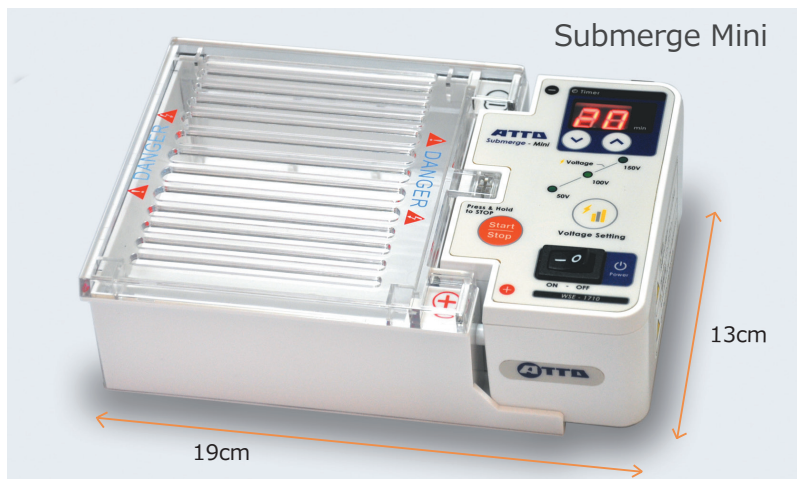
~Simple and Easy system for agarose electrophoresis~



150V High voltage, Timer setting, Alarm, Compatible with multi-channel pipette !

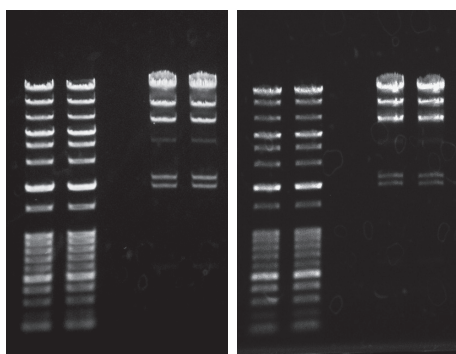
Compact, safety, and high performance electrophoresis system

DNA agarose electrophoresis apparatus with built-in power supply



- ☆ **Output Power: 50V, 100V, 150V**
- ☆ **Count-down Timer with Alarm:**
Program range 0 to 99 min, or hold.
- ☆ **Safety design**
- ☆ **Buffer Volume: ~200 m L**
- ☆ **Gel casting kits are included**
2 Large trays, 4 Small trays
- ☆ **Ultraviolet transmission tray**
Compatible with multi-channels pipette
Well width of Comb: 3mm/5.8mm

The electrophoretic pattern is not influenced by high voltage.



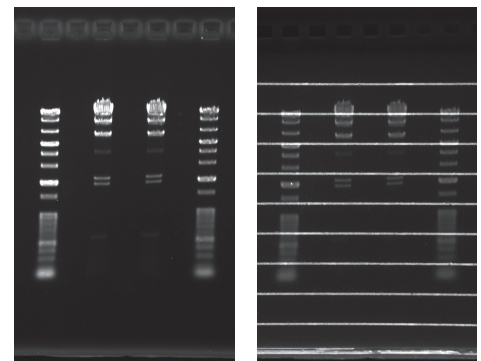
100V 30 min

150V 20 min

DNA ladder marker and λ Hind III marker were separated by 1% agarose gel with TAE buffer. Left; 100V, 30min, Right; 150V, 20min. The electrophoretic patterns and migration distance of each band were almost the same between 100V and 150V results.

UV transmission tray

Lines on gel tray are emitted by excitation light (UV). These lines help to confirm the migration distance of each band.



Without tray

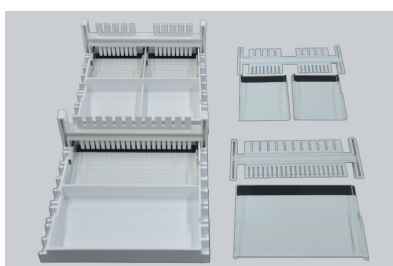
With tray

Specification

	WSE-1710 Submerge-Mini (2322100)
Gel Tray	S: 54 × 60 mm (4 pcs), L: 110 × 60 mm (2 pcs), UV
Comb size	S: 18well (9well x2)/10 well(5well x2) x2pcs, L: 22 wells/12 wells x2pcs Width 3 mm/5.8 mm, Thickness 1 mm, Compatible with multi-channel pipette
Buffer volumes	200 ~ 230mL
Tank size	110 × 121 × 43mm
Power supply Input	AC100~120V, 50/60Hz
Output	DC50V /100V / 150V 40W
Timer	Count-down, time range is 1 ~ 99 min, Alarm
Safety	Turn off the power without setting lid (Error # E1, Alarm)
Size	190 × 130 × 60mm 0.45kg
Component	Main unit (Electrophoresis chamber, Power supply unit, Safety cover), Gel casting kit S(Gel tray S x4, Gel tray S x1, Comb S x2), Gel casting kit L(Gel tray L x2, Gel tray L x1, Comb L x2), Power cable, Instruction Manual



Electrophoresis system



Gel casting kit, S & L

Tray size is the same as that of Mupid2 plus.
Tray of Mupid exU is not available.

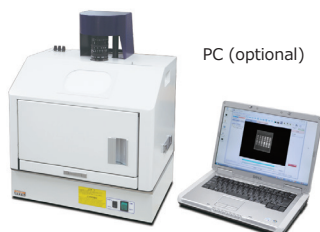
Gel casting kit

2322109	Gel casting kit S & L
2322108	Gel casting kit L
2322107	Gel casting kit S

Related products

Gel documentation system

Printgraph series



WSE-5100 Printgraph MEGA

External PC control system
Resolution : 1.4 mega pixels
Light source : UV (optional)
Blue/Green LED (optional)

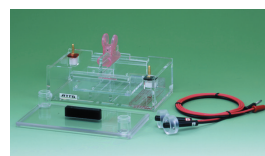


WSE-5200 Printgraph 2M

Touch panel control system
Resolution : 2 mega pixels
Light source : UV (included)
White epi (included)
RDG light source (optional)
Printer (optional)

Submarine electrophoresis apparatus

Submerge series



AE-6100



AE-6111

AE-6100/6111 Submerge

Gel size : AE-6100 80x100mm
AE-6111 120x160mm
Comb : AE-6100 10 well, 5mm width
AE-6111 26/13 well, 3/6mm thickness
Tray : UV transmission tray

For more information, please contact us:



ATTO corporation

Providing research solutions for Biochemistry/Molecular Biology/Genetic engineering Development Production/Distribution/Service

■ Head Office 〒111-0041 3-2-2 Motoasakusa, Tai-to-ku, Tokyo TEL (03)5827-4861 FAX (03)5827-6647

■ URL <http://www.atto.co.jp/>

■ Mail: info@atto.co.jp