

# Blocking Buffer

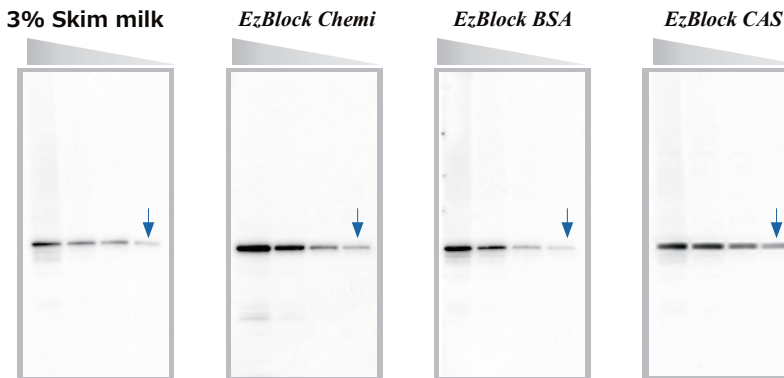
AE-1475 EzBlock Chemi  
AE-1466 EzBlock BSA  
AE-1477 EzBlock CAS



- ◎ Simple preparation: only diluting it 5 times with distilled water
- ◎ Applicable in various blotting, ELISA and so on
- ◎ More effective than previous product, *EzBlock!*

Purpose and Application	EzBlock Chemi	EzBlock BSA	EzBlock CAS
Western Blotting	○	○	○
Save an experiment cost	◎	○	○
Decrease cross reaction of antibody	◎	○	◎
Decrease background	○	△	◎
Prevent from over-blocking	○	◎	△
Use for detecting phosphorylation	◎	○	×
Use for stripping	○	○	◎
Staining of immunity	○	○	○
Southern blotting	○	○	○
Northern blotting	○	○	○
Detecting avidin-biotin	○	○	×

 ATTO blocking buffer series provide data having higher S/N ratio than skim milk!



**Sample:** HeLa cell extract (Dilute in 2 times from 2µg/lane)  
**Blocking:** at room temperature for 30 min  
**Primary antibody:** Antihuman Smad2 antibody (rabbit), dilute it 3,000 times  
**Second antibody:** HRP labeling antirabbit IgG antibody, dilute it 100,000 times  
**Luminescent substrate:** *EzWestLumi plus*  
**Detection:** Ez-Capture MG Exposure time: 1min.

→ *EzBlock* series decrease background and provide clear bands.  
→ 3% skim milk may cause over-blocking and sensitivity of detection declines.

Product	AE-1475 EzBlock Chemi	AE-1476 EzBlock BSA	AE-1477 EzBlock CAS
Code	2332615	2332616	2332617
Package	1 Bottle	1 Set	1 Set
Volume	500mL (5x concentrated solution)	200mL (5x concentrated solution), Tween-20: 10mL	200mL (5x concentrated solution), Tween-20: 10mL
Use	For Mini size membrane x50 pcs	For Mini size membrane x20 pcs	For Mini size membrane x20 pcs
Component	Tris buffer, Blocking reagent	Tris buffer, BSA	Tris buffer, Casein
Storage	Cold storage for 1 year	Cold storage for 1 year	Cold storage for 1 year



## ATTO Corporation

Providing research solutions for Biochemistry/Molecular Biology/Genetic engineering development

Head Office: 3-2-2 Motoasakusa, Taito-ku, Tokyo, 111-0041 JAPAN

TEL: 81-3-5827-4863 FAX: 81-3-5827-6647

Email: eig@atto.co.jp