



ATTO
AE-1465 EzFastBlot

Electrophoresis Specialist ATTO presents New Blotting Reagent !!

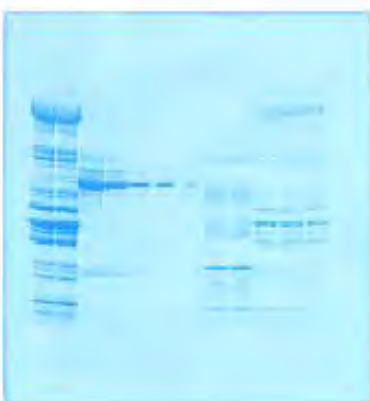
- Fast electrophoretic transfer (blots protein onto membrane in 5 to 15 minutes)
 - Easy apply with only 1 reagent for semidry blotting
 - Simple preparation in ten-times dilution prior to use
 - Methanol Free
 - Applicable to diverse blotting equipment** (Your current equipment can be used)
- ** Please confirm the capacity of current and voltage. When the fast electrophoretic transfer condition, it requires 450mA and 35V approximately for 1 piece of mini-slab gel.
- Running cost is reasonable!



AE-1465 EzFastBlot

Preparation	: Diluted 10-fold with distilled water
Major components	: Tris, Amino acid
Package	: 500mL / Bottle
Amount of working solution	: 5L (Approx. 50 times of blotting)
Storage period	: Store at room temperature for 1 year

<Sample Data-1>



Data using EzFastBlot

Gel : gradient polyacrylamide gel (5 to 20%), compact size (76mm (W) x 70mm(L))

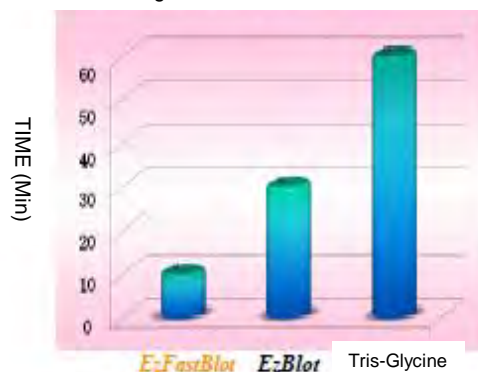
Power condition : constant current, 250mA for 10min

Membrane : PVDF membrane

Staining : CBB (Coomassie brilliant blue) staining

<Sample Data-2>

Comparison with each blotting time of 3 transferring buffer



ATTO CORPORATION

3-2-2 Motoasakusa Taito-ku Tokyo 111-0041 Japan
 Fax 81 3 5827 6647
 Tel (03) 5827 4863
 E-maileig@atto.co.jp
 http://www.atto.co.jp

Distributed by: